

Collaborators

Within the University

College of Arts and Sciences

*Passport Steering Committees
2012-13; 2013-14; 2014-15; 2015-16*

*Departments of Anthropology; Arabic Studies,
History; Jewish Studies*

College of Engineering

Dr. K.C. Mahboud, Civil Engineering

College of Fine Arts

Ethnomusicology

Confucius Institute

Education Abroad

Gluck Equine Research Institute

International Center

UK HealthCare

Within the Community

International Museum of the Horse

Keeneland Library

Pyramid Society

UCLA Center for Jewish Studies

Hillel of UCLA

Shanghai Jewish Refugee Museum

Visit us Online

Virtual Exhibits

Alebrijes of Oaxaca, Mexico

http://uknowledge.uky.edu/world_mexico_alebrijes/

Arabian Roots

http://uknowledge.uky.edu/world_yome_arabian_roots/

A Glimpse into Ancient Mexico

http://uknowledge.uky.edu/world_mexico_codices/

Indigenous Clothing — Huipiles

http://uknowledge.uky.edu/world_mexico_huipiles/

The Journey to Modern Europe

http://uknowledge.uky.edu/world_europe_journey/

Mexican Revolution

http://uknowledge.uky.edu/world_mexico_revolution/

Middle Eastern Passages

http://uknowledge.uky.edu/world_yome_calligraphy/

Scenes from Mexico

http://uknowledge.uky.edu/world_mexico_postcards/

Snapshot of Pre-Soviet Russia

http://uknowledge.uky.edu/world_russia_postcards/

Souvenir Images of China, 1910-1980

http://uknowledge.uky.edu/world_china_postcards/

Soviet Cold War-era Posters

http://uknowledge.uky.edu/world_russia_soviet_posters/

Touring the Ottoman Empire

http://uknowledge.uky.edu/world_yome_postcards/



University of Kentucky Libraries

**Stamping the Passport:
University of Kentucky Libraries as Partner
for Internationalization on Campus**

Jennifer Bartlett, Presenter



Connecting and collaborating with the community through programs, exhibits, and webpages.



2015-2016 International Working Group:

Jennifer Bartlett, Jan Carver, Toni Greider (chair), Adrian Ho, and Jennifer Richmond

About International Programs in the University of Kentucky Libraries

International Programs in the University of Kentucky Libraries (UKL) officially began with August of 2010 with the appointment of a program director. The director is assisted by the International Working Group (IWG), a group of individuals from various areas in the library who have an interest in international programs and activities. For the past 6 years this group has focused on areas of concentration that were developed in consultation with the University of Kentucky International Center. **Areas of Concentration:**

- Support for Externally Focused Programs
- Support for Campus Activities
- Visibility for our Existing International Collections
- Library Initiated Projects
- Intercultural Workshops for Library Staff Who Serve Our Students

This poster focuses primarily on the IWG's support for Campus activities. A complete review of the group's activities can be found on the UKL International Program's webpage.

<http://libraries.uky.edu/ip>

Connecting to the World

UKL International Programs takes its programming to the World. With a few exceptions all of the exhibits have a virtual presence in UKnowledge (the institutional repository) as well as on the web page. When possible, programs are also made available in UKnowledge and electronic guides are created using the libguide software. UKL has also hosted 3 international visiting scholars through its International Programs.

Research Guides



- * Beginner's Guide
- * Non-English Resources
- * Education Abroad: Research Resources
- * ESL Reading List

Visiting Scholars

2011



China

2012



South Africa

Connecting to the World: Passport to the World Program

Country or Region	Virtual Products
 South Africa	Online Book Club
 China	1 virtual exhibit 1 research guide
 Russia's Realms	2 virtual exhibits 1 research guide
 Mexico	5 virtual exhibits 7 research guides
 Middle East	3 virtual exhibits 4 research guides
 Europe	1 virtual exhibit 3 research guides

Engaging the Community Exhibits

Since 2011 UKL International Programs has mounted 24 educational exhibits featuring different areas of the world.



Flags in the Atrium of William T. Young Library

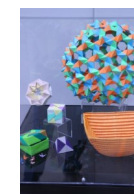
Each year the flags for the passport countries are displayed. The flags are featured in activities during International Education Week.



Chinese New Year 2012



Soviet Military Posters 2012



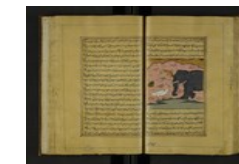
Extreme Origami 2013



Mexican Medicine 2013



Mexican Codex Exhibit 2013



Middle Eastern Manuscripts 2014



European Movie Posters 2015



European Union 2016

Engaging the Community Programs

Programming has been an essential part in engaging both the University and the general community. All programs are open to the general public.



Chinese Musical Instruments

Year of China

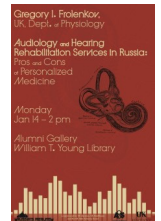


Chinese Acupuncture



Soviet Military Posters and Russian Tea

Reimagining Russia's Realms



Rehabilitation Services in Russia



Blossoms of Fire

Viva Mexico!



Mexico on the Digital Frontier



Arab Spring and Social Media

Year of the Middle East



Food in Europe

Year of Europe