

Welcome!

As a University of Kentucky community-based faculty member, you may now access the UK Medical Center Library's (UK MCL) **electronic resources**. Most are only a click away from the library's home page:

<http://www.uky.edu/Libraries/MCL>. By bookmarking this site on your Web browser, it will always be handy when you need it.

This benefit of your faculty membership will provide information support for you as a preceptor. The library provides a variety of information sources through its website including textbooks, journal articles, databases and systematic reviews. This pamphlet will show you where to begin.



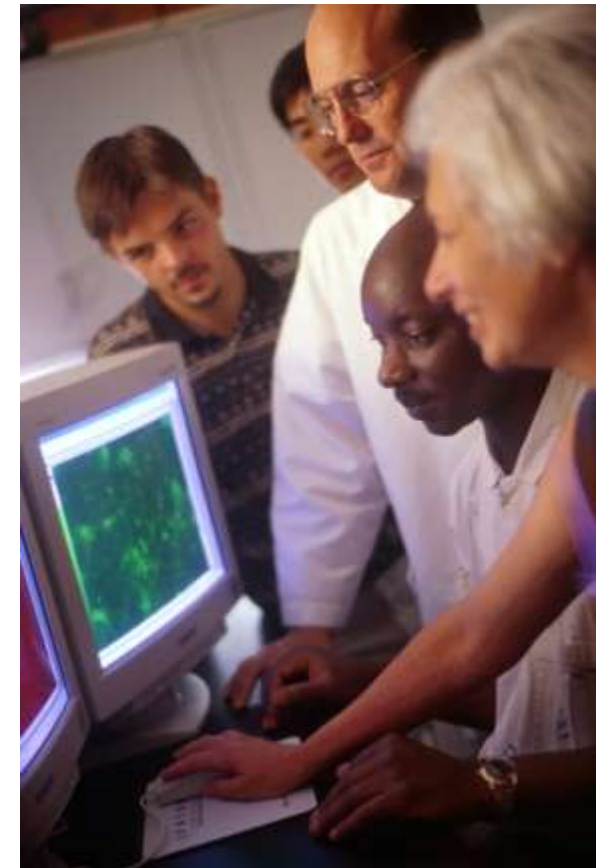
And remember....

- When accessing electronic resources, you will need to enter your **Link Blue** ID and password when prompted by the proxy server. Don't have a Link Blue Account? Contact the UK Community-Based Faculty Program Office at 859-323-8018
- When registering to use our **ILLiad** Interlibrary Loan Service, go to <http://mcilliad.uky.edu> and click on "First Time Users". Be sure to identify yourself as "UK Community-Based Faculty" in the Status field.
- When checking out books for the first time from the UK MCL, see our Circulation staff to be entered into the **Voyager System** and receive a library barcode.

UpToDate Access

Additional clearance is required for accessing UpToDate off-campus. Be sure to request this when obtaining your Link Blue ID and password through the UK Community-Based Faculty Program Office (859) 323-8018. Off-campus users will not be able to access UpToDate from the link on the Medical Center Library's home page. Instead, go to our UpToDate Research Guide for details on accessing this resource off-campus:

<http://libguides.uky.edu/uptodate>. Click on the "UpToDate Access Options" tab and use Option #3.



**Medical Center Library
University of Kentucky
800 Rose Street
Lexington, KY 40536-0298
(859) 323-5300 phone
(859) 323-1040 fax
mclib@uky.edu**

<http://www.uky.edu/Libraries/MCL>

**Library Services for
University of Kentucky
Community-Based Faculty**



E-Journals and E-Books

To access thousands of electronic full-text biomedical journals from the UK Medical Center Library's home page (<http://www.uky.edu/Libraries/MCL>), click on "E-Journals" at the top of the screen (1). Simply type in the title of the journal you wish to access. The proxy server will prompt you for your Link Blue ID and password. A very small number of journals will require an additional password which is available by contacting the Medical Center Library.

To find electronic textbooks, click on "E-Books" on the left margin of the UK MCL's home page (2). Books are categorized by subject or specialty.

Medline, PubMed and other databases

Medline is the world's premiere index of the medical journal literature. Produced by the National Library of Medicine and updated daily, it contains over 19 million citations. PubMed is the version of Medline available free to the public. By



linking to PubMed from the UK MCL's home page, you can directly link to full-text articles owned by the Medical Center Library. Click on "Selected Databases" in the top left margin (3) and select "PubMed." Another source is **Medline OvidSP**, also available under "Selected Databases." Click on "More Related Databases" (beneath "Selected Databases") to see other resources such as **PsychINFO**, **AMED** (Allied and Complementary Medicine) and **MD Consult**.

Two more resources of note under "Selected Databases" are the evidence-based medicine resource, **Cochrane Library**, and the expert opinion product, **UpToDate**. Due to license agreements, not all electronic resources are available off campus. See reverse to access UpToDate.

ILLiad Interlibrary Loan Service

Occasionally you will need an item the UK MCL does not have. An option you may want to consider is the ILLiad Interlibrary Loan Service. Go to: <http://mcilliad.uky.edu> and enter your ILLiad ID and password to login. To register for this service and create an ID and password, click on "First Time Users" and select "UKMC Community-Based Faculty" in the status field if you do not have a library barcode.

Checking out materials

Looking for a particular text? **InfoKat**, the Library's catalog (available by clicking on "InfoKat" at the top of the UK MCL home page) (4) will tell you if it is in our collection. In order to check out materials, please see our Circulation staff to be entered into the Voyager System and receive a library barcode.

Training Sessions

The MCL offers a variety of training opportunities on its electronic resources. To see a schedule of onsite classes and to register, click on "MCL Classes" on the left margin of the UK MCL home page (5). Classes are free and everyone is welcome to attend.



Contact Us

We are only a phone call or an email away.

859-323-5300

mcilib@uky.edu

Try our virtual reference service by clicking on **Ask-a-Librarian** at the top left of our home page.

<http://www.uky.edu/Libraries/MCL>

To obtain a **Link Blue** Account, call 859-323-8018.

Check us out on Facebook and Twitter!