

## Welcome!

As a University of Kentucky Community faculty member, you may now access the UK Medical Center Library's (UK MCL) **electronic resources**. Most are only a click away from the library's home page. <http://libraries.uky.edu/mcl> By bookmarking this site on your web browser, it will always be handy when you need it.

This benefit of your faculty membership will provide information support for you as a preceptor. The library provides a wide variety of information sources through its website including textbooks, journal articles, databases and systematic reviews. This pamphlet will show you where to begin.

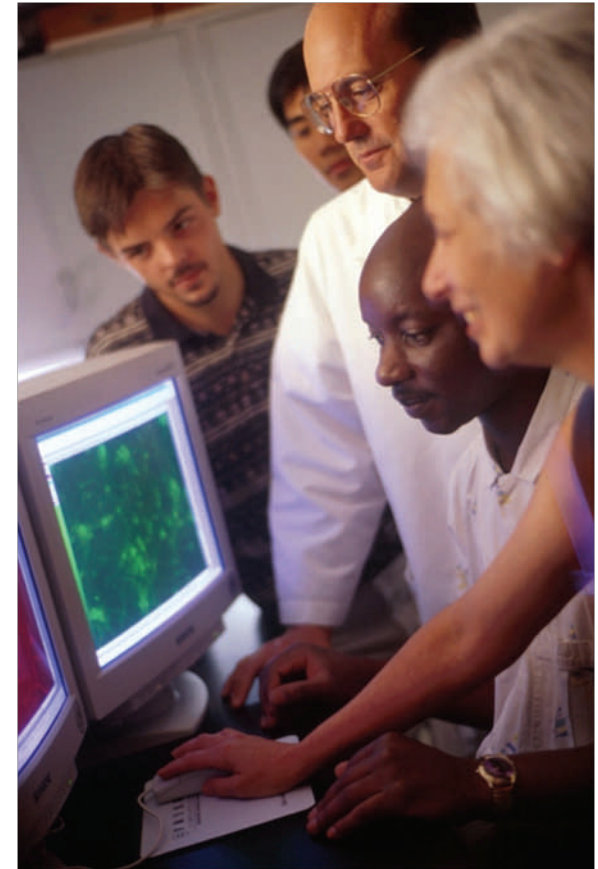


## And remember...

- When accessing electronic resources, you will need to enter your **Link Blue** ID and password when prompted by the proxy server. Don't have a Link Blue Account? Contact the UK Community Faculty Program Office at 859-323-8018.
- When registering to use our **ILLiad** Interlibrary Loan Service, be sure to identify yourself as "UKMC Community Faculty" in the Status field.
- When checking out books for the first time from the UK MCL, see our Circulation staff to be entered into the **Voyager System** and receive a library barcode.

## UpToDate Access

Additional clearance is required for accessing UpToDate off-campus. Be sure to request this when obtaining your Link Blue ID and password through the UK Community Faculty Program Office (859) 323-8018. Off-campus users will not be able to access UpToDate from the link on the Medical Center Library's home page. Instead, go to our UpToDate Research Guide for details on accessing this resource off campus: <http://libguides.uky.edu/uptodate> Click on the "UpToDate Access Options" tab and use Option #3.



## Library Services for University of Kentucky Community Faculty



**Medical Center Library**  
**University of Kentucky**  
800 Rose Street  
Lexington, KY 40536-0298  
(859) 323-5300 phone  
(859) 323-1040 fax  
[mclib@uky.edu](mailto:mclib@uky.edu)  
<http://libraries.uky.edu/mcl>

## E-Journals and E-Books

To access thousands of electronic full-text biomedical journals from the UK Medical Center Library's home page <http://libraries.uky.edu/mcl> click on "E-Journals" at the top of the screen (1) or use the link in the left column. Simply type in the title of the journal you wish to access. The proxy server will prompt you for your Link Blue ID and password. A very small number of journals will require an additional password which is available by contacting the Medical Center Library.

To find electronic textbooks, click on "E-Books" on the left margin of the UK MCL's home page (2). Books are categorized by subject or specialty.

## Medline, PubMed and other databases

Medline is the world's premiere index of the medical journal literature. Produced by the National Library of Medicine and updated daily, it contains over 19 million citations. PubMed is the version of Medline available free to the public. By



linking to PubMed from the UK MCL's home page, you can directly link to full-text articles owned by the Medical Center Library. Click on "Selected Databases" in the top left margin (3) and select "PubMed." Additional sources under "Selected Databases" include **MedlineOvidSp**, **PsychINFO**, **AccessMedicine**, **Procedures Consult**, and **MD Consult**.

Two more resources of note under "Selected Databases" are the evidence-based medicine resource **Cochrane Library**, and the expert opinion product, **UpToDate**. Due to license agreements, not all electronic resources are available off campus such as Micromedex. UpToDate is available with additional clearance; see back panel of this brochure for details.

## ILLiad Interlibrary Loan Service

Occasionally you will need an item the UK MCL does not have. An option you may want to consider is the ILLiad Interlibrary Loan Service. To register for this service and create an ID and password, click on "ILLiad (MC ILL/Document Delivery Request)" on the left margin of the MCL home page. (4) Then click on "First Time Users" and select "UKMC Community Faculty" in the status field. Once you have created your account you may login at the following address. <http://mcilliad.uky.edu> Or you can just click on the "ILLiad (MC ILL/Document Delivery Request)" link.

## Checking out materials

Looking for a particular text? InfoKat, the Library's catalog (available by clicking on "InfoKat" at the top of the MCL home page) (5), will tell you if it is in our collection. In order to check out materials, please contact our Circulation staff to be entered into the Voyager System and receive a library barcode.

## Training Sessions

The MCL offers a variety of training opportunities on its electronic resources. To see a schedule of onsite classes and to register, click on "MCL Classes" on the left margin of the UK MCL home page. Classes are free and everyone is welcome to attend.

## Contact Us

We are only a phone call or an email away.

**859-323-5300**

[mclib@uky.edu](mailto:mclib@uky.edu)

Try our virtual reference service by clicking on the "Ask a Medical Librarian" link in the left column of our home page.

To obtain a Link Blue Account, call 859-323-8018.

Check us out on Facebook and Twitter!



<http://www.facebook.com/UKMCL>



<http://twitter.com/UKMCL>

The screenshot shows the University of Kentucky Libraries website. The top navigation bar includes links for Articles & Books, E-Journals (circled in red with a red arrow and number 1), Databases, Site Search, Research Guides, and Guided Search. Below this is a search bar with a dropdown menu set to 'Libraries Worldwide' and a 'Go' button. Below the search bar are links for 'Or use UK's InfoKat Library Catalog, or WorldCat Local, or Database Resources.' (circled in red with a red arrow and number 5). The left sidebar contains a menu with 'Selected Databases' (circled in red with a red arrow and number 3), 'Research Guides', and 'Library Links'. Under 'Library Links', 'E-Books' (circled in red with a red arrow and number 2) and 'ILLiad (MC ILL/Document Delivery Request)' (circled in red with a red arrow and number 4) are highlighted. The main content area features a 'New E-book Edition' announcement for 'The Merck Manual of Diagnosis & Therapy (2011)', a 'MCL Fall Class Schedule' link, and a 'Free PsychiatryOnline.com Book of the Month for September' link. At the bottom, there are logos for PubMed, CINAHL (EBSCOhost), MEDLINE (OvidSP), Databases Selected for the MCL, MCL e-books, 2011 Resources Guide (pdf), mobile resources, and Exchange @ UK.