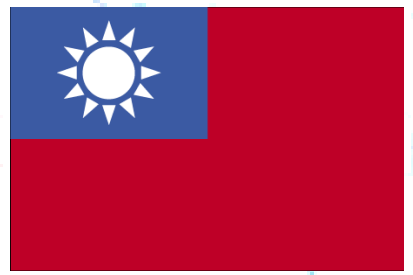
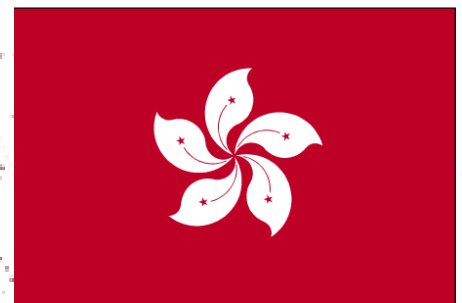




Year of China



What is it?
And
What are we doing about it?



A map of East Asia and surrounding regions, including China, Mongolia, North Korea, South Korea, Taiwan, and parts of Central Asia and Southeast Asia. The map is light blue and white, with country names in black. The title 'Year of China: Awakening the Past, Discovering the Future' is overlaid in red text.

Year of China: Awakening the Past, Discovering the Future

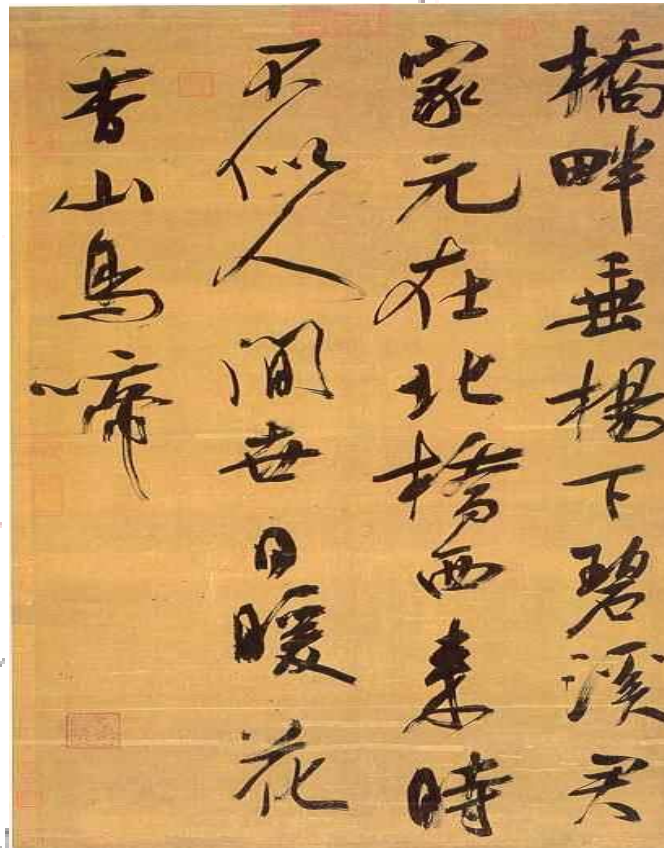
- Designed to introduce the study of China
 - Open House
 - Master classes
 - A & S 100 Passport to China: Global Issues & Local Understanding
 - ArtsAsia Festival
 - Symposium on Visual Culture in Contemporary China

A map of East Asia and Southeast Asia, showing the outlines of China, Mongolia, North Korea, South Korea, Taiwan, and the Philippines. The Yellow Sea, East China Sea, and South China Sea are labeled. The map is rendered in a light blue and white color scheme.

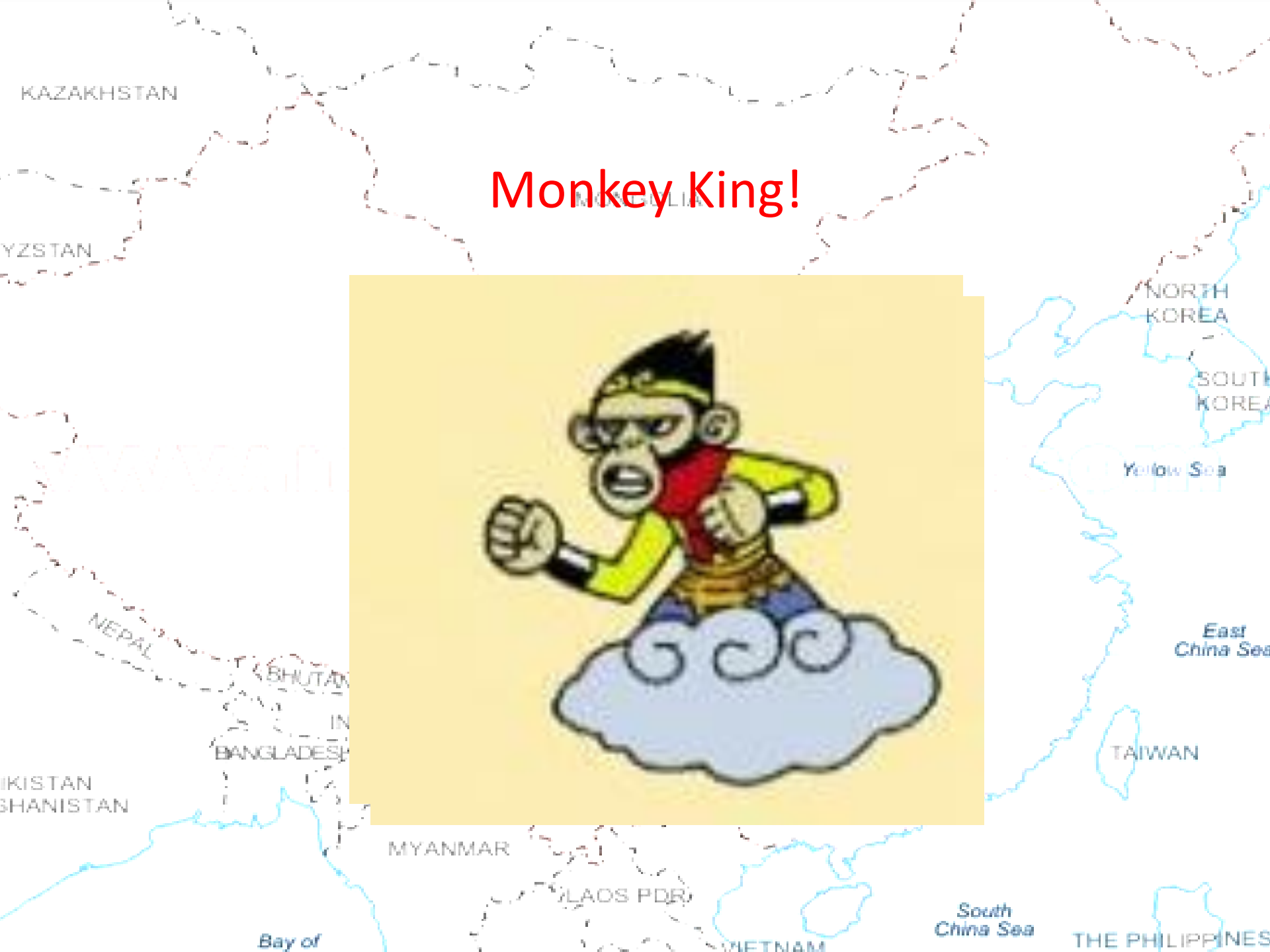
Library Contribution

- Chinese Cultural Center (the Hub)
- Electronic Guide to Chinese Resources
- Interviews
- Lectures
- Exhibits

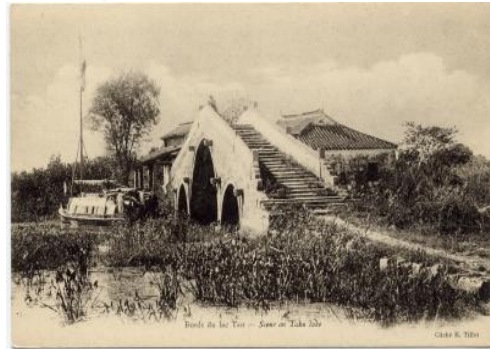
Calligraphy

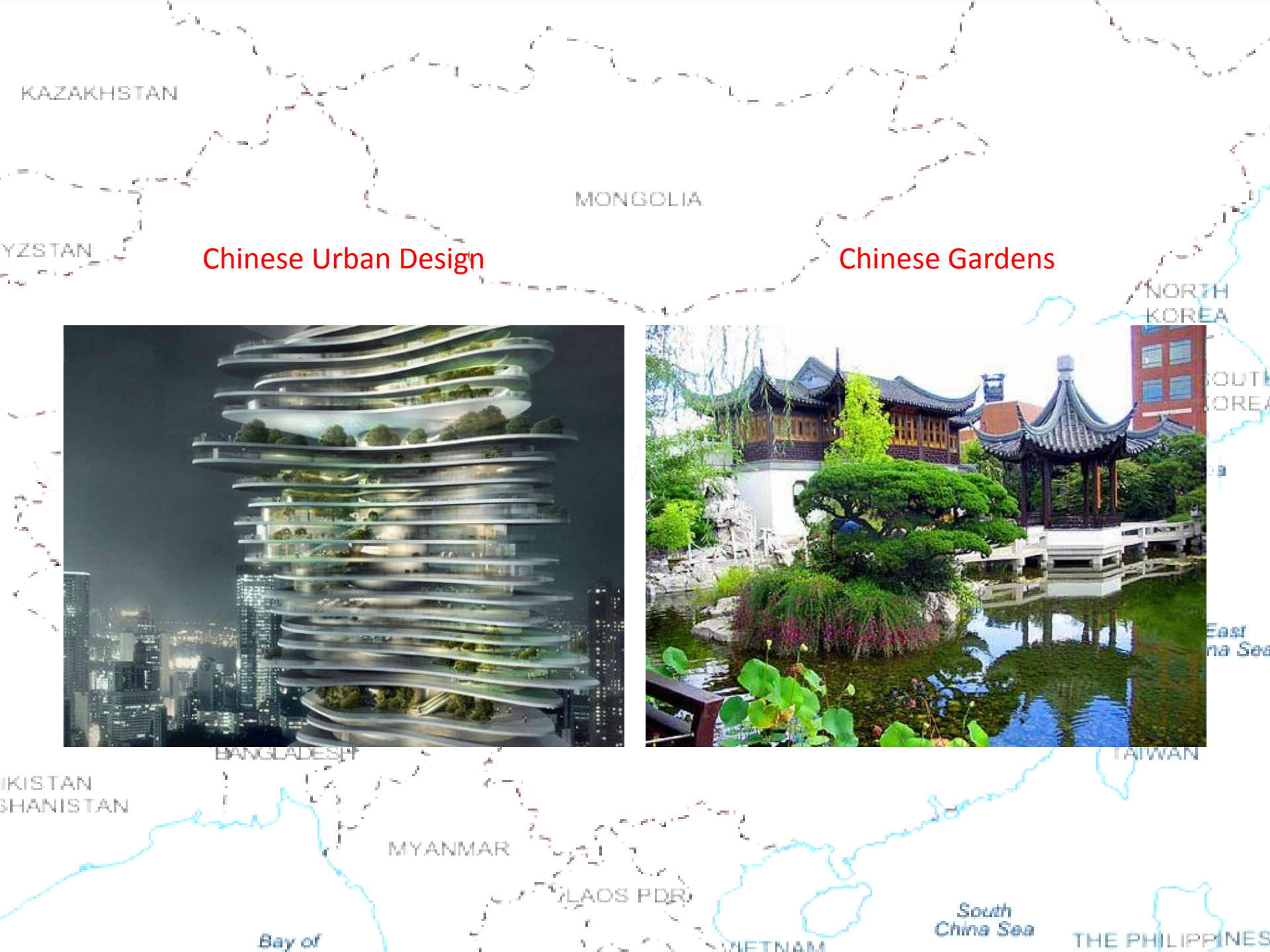


Monkey King!



20th Century Chinese Post Cards





Chinese Urban Design

Chinese Gardens



A map of East Asia and Southeast Asia, showing countries like Kazakhstan, Uzbekistan, Mongolia, North Korea, South Korea, Taiwan, and the Philippines. The map is light blue and white, with red text overlaid.

Special Thank You To:

- Fine Arts Library
Gail/Meg
- Special Collections
Gordon/Deirdra
- Design
Faith

International Working Group

